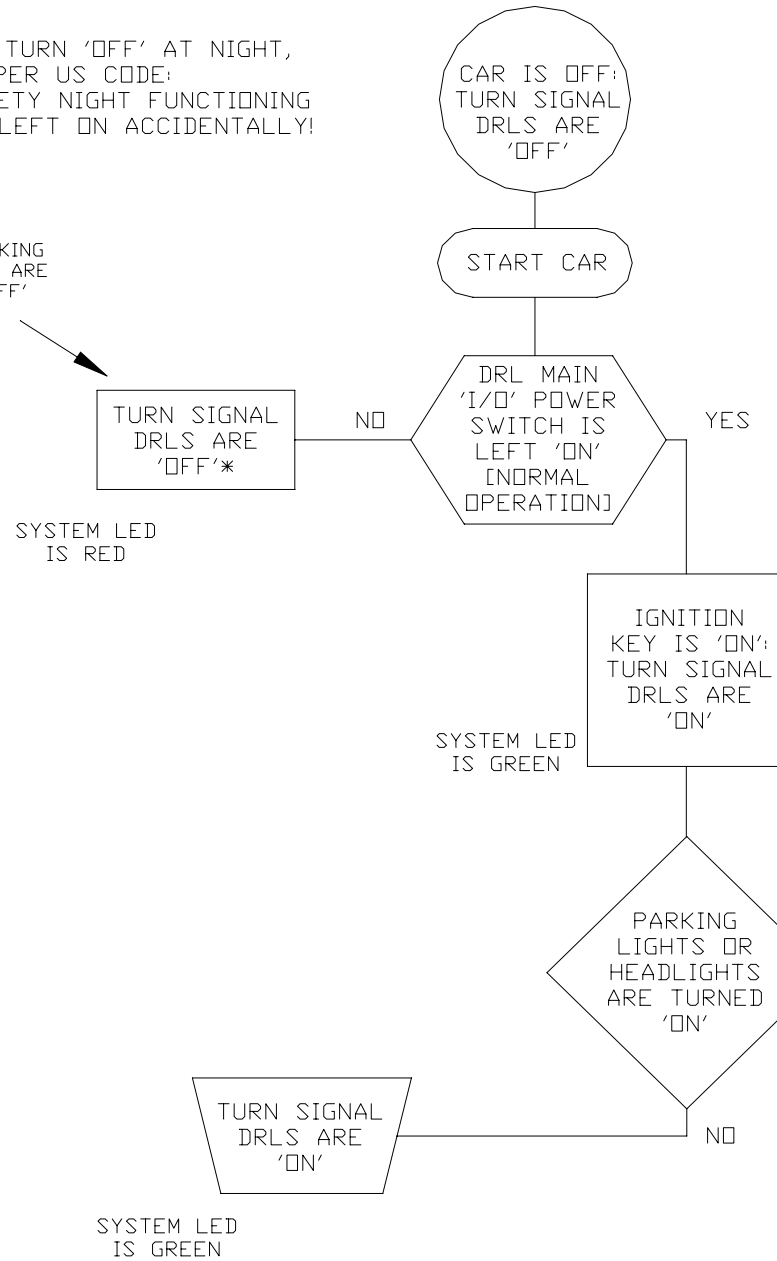


NORMAL DRL DAYTIME MODE

DRLS ALWAYS TURN 'OFF' AT NIGHT,
AS PER US CODE!
EMERGENCY/SAFETY NIGHT FUNCTIONING
CAN NEVER BE LEFT ON ACCIDENTALLY!

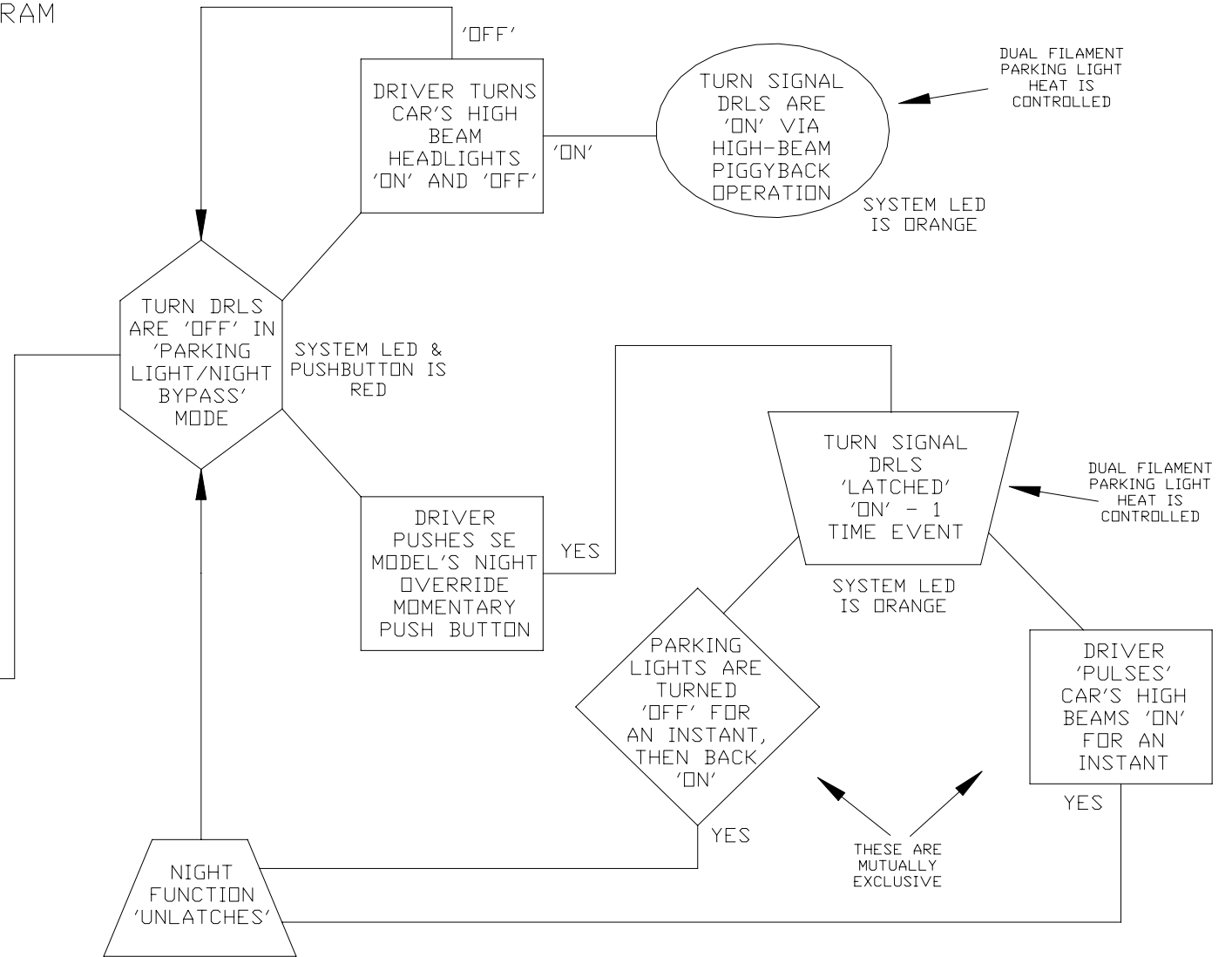
*DAY MODE & PARKING
LIGHT/NIGHT MODE ARE
PERMANENTLY 'OFF'
HERE



DRL-2005 SE
SYSTEM
OPERATION
DIAGRAM

CUSTOM TURN SIGNALS:
OFF-ROAD/EMERGENCY/BAD
WEATHER/FOG/'PARKING LIGHT/NIGHT ON' MODE

FRONT AND REAR SAFETY ADVANTAGES:
BRIGHT AMBER FRONT OPERATION PLUS
SIMULTANEOUS TAIL LIGHT OPERATION;
MAXIMIZES VEHICLE VISIBILITY



NOTE: TURN SIGNALS AND HAZARD WARNING LAMPS ALWAYS WORK NORMALLY
THROUGHOUT ENTIRE OPERATING SEQUENCES EVERYTIME, IN EVERY MODE

FUNCTIONAL USES: DURING SNOWSTORM, DRIVING RAIN, HEAVY FOG; FOR SEARCH &
RESCUE VEHICLES, ON AMBULANCE/POLICE/FIRE TRUCKS ENROUTE TO EMERGENCY, ETC.